

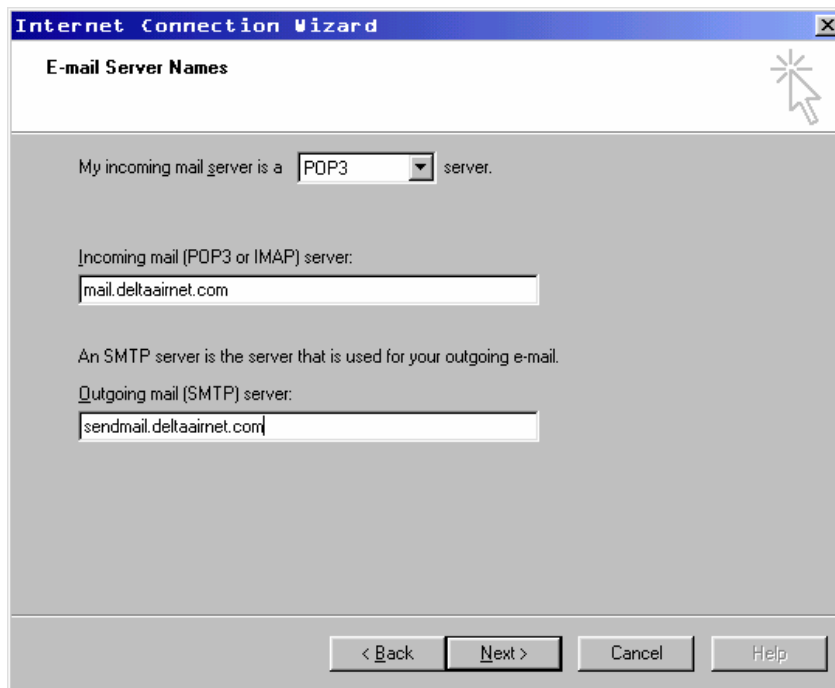


Delta Wireless Internet

How to Configure Microsoft Outlook and Outlook Express E-mail

Whether you have a Delta Wireless E-mail account or some other POP-3 account you can configure Microsoft Outlook or Outlook Express by following the simple steps outlined in this document. Don't worry too much about making mistakes in creating your new e-mail profile, you can always go back and make changes later. To add you new e-mail profile:

1. Open Outlook and select Tools | Accounts... from the menu at the top of the window.
2. A second, smaller, window will open showing your existing e-mail accounts, if there are any. Click the Add button and select Mail... This will start a wizard that will walk you through a few setup screens
3. The first screen prompts you for a Display name. This display name is the name that appears on the "From" line of your message when you send an e-mail to someone else. Enter a name here and click Next.
4. The second screen prompts you for an e-mail address. If you have a Delta Wireless e-mail account this will be your user name with @deltaairnet.com behind it (e.g. user@deltaairnet.com). Click Next to continue on.
5. The Third Screen asks for mail server information. The Delta Wireless server is a **POP3** server (the default setting). The incoming mail server is **mail.deltaairnet.com** and the outgoing server is **sendmail.deltaairnet.com**. Be sure to get the double "A"s in the server addresses, its easy to overlook this. Consult your documentation or contact your provider for this server information if you setting up an account for another provider. Click Next once you have these entries filled in.



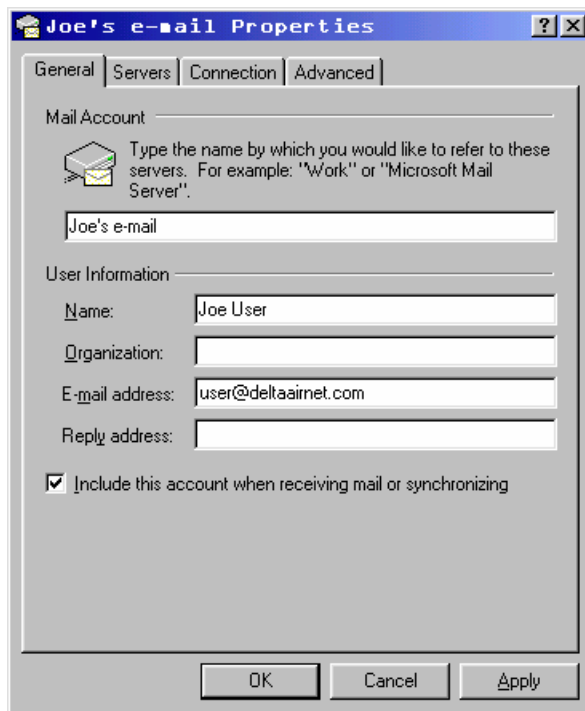
6. The Fourth screen asks you for your account name and password. For Delta Wireless accounts your account name is your e-mail, do not enter just your user name, the mail server will not allow you to log in as “joeuser” versus “joeuser@deltaairnet.com”. If you are setting up an account for a service other than Delta Wireless check your user documentation, check an existing setup, or contact your provider to find out how their servers handle account names. Do check “Remember password” but do not check “Log on using Secure Password Authentication (SPA)”.
7. The Fifth screen in Outlook asks you how you want to connect to the mail server when checking e-mail. If you use our wireless service to check e-mail select the Connect using my local area network (LAN) option. Outlook Express does not prompt you for this information.
8. The last screen lets you know your new profile has been added. Click finish.

You can test your new e-mail account by composing an e-mail to yourself and clicking Send/Receive to send it. If you have all of the account settings correct the send/receive dialog will open and send your e-mail. Click Send/Receive a few moments later and you should receive your e-mail. Be patient, depending on the volume of e-mail this could take seconds or possibly minutes.

The account you just created will show up in the Internet Accounts window, listed by the name of the first mail server. This is fine if you only have one account on your computer, but what if you have several accounts on the same server? Microsoft Outlook will conveniently call additional accounts mail.deltaairnet.com(2), mail.deltaairnet.com(3)

and so on. If you find this a silly and inconvenient as we do, you can change the name Outlook uses to refer to these accounts by returning to the Internet Accounts window (Tools | Accounts and click the Mail tab in Outlook Express, Outlook opens to this tab by default) selecting the account you want to change and

1. Click the Properties button.
2. Replace the Mail Account information, or the first entry on the first tab that begins with “Type the name by which you would like to refer to these servers”, with a friendly name like “Joe’s e-mail”, or whatever you like. You can add the name of an organization and a Reply address if you like while you are on this screen. Outlook assumes the E-mail address entry to be your Reply address unless you specify otherwise.



Note that you can change quite a few settings for your e-mail profile on the various tabs on this screen. Return to this section any time you need to modify your profile.